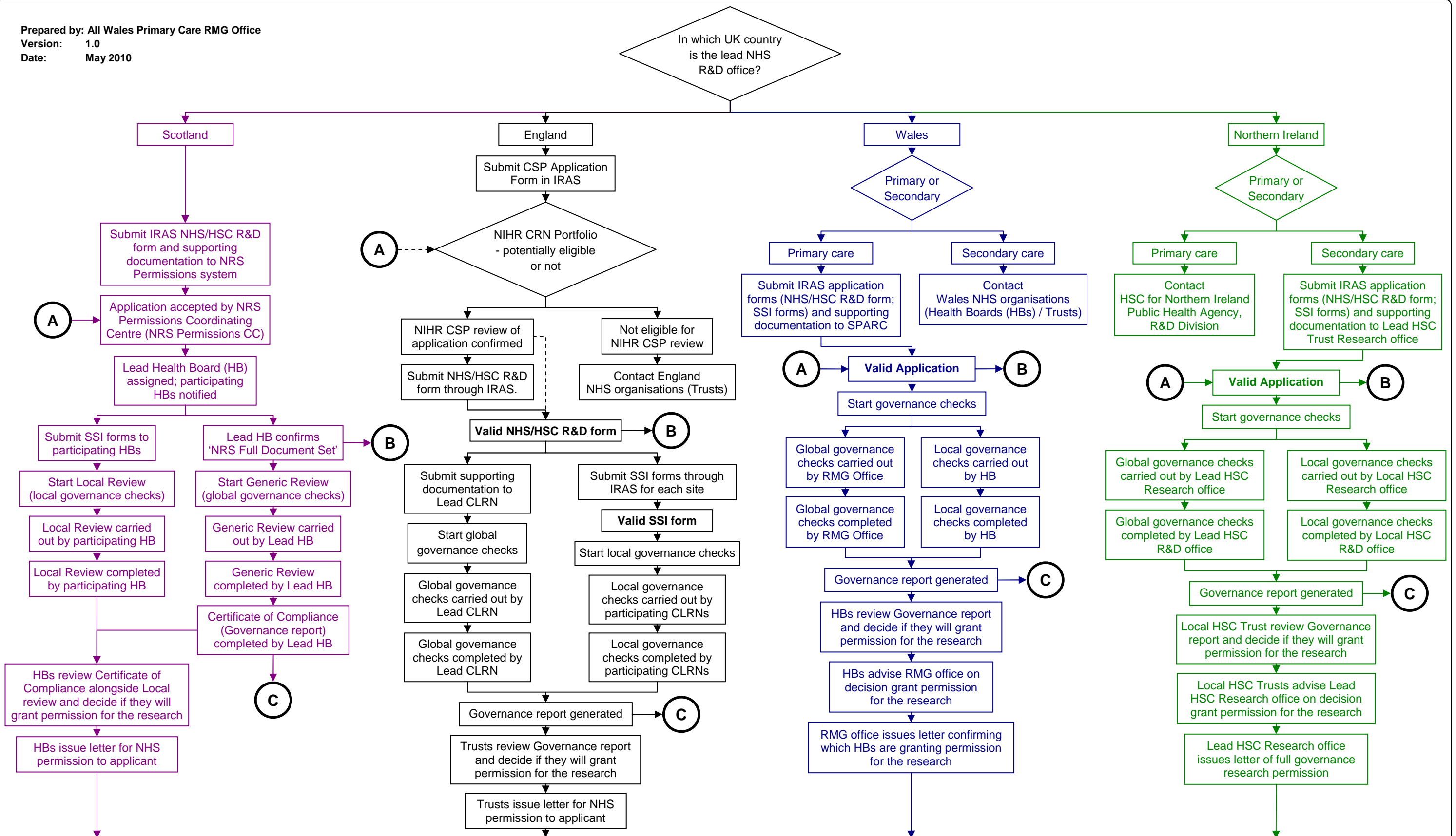


UK Wide NHS Permissions for Research Flowchart

NB: Flowchart terminology is as used in national documentation

Prepared by: All Wales Primary Care RMG Office
Version: 1.0
Date: May 2010



RESEARCH MAY COMMENCE AT SITES THAT HAVE BEEN GRANTED NHS/HSC PERMISSION FOR RESEARCH

(A) Application received from other UK nation

- England – NHS/HSC R&D form plus IRAS xml file.
- Other UK nations – NHS/HSC R&D form, IRAS xml file plus supporting documentation.

(B) Application transferred to other UK nation

- England – NHS/HSC R&D form plus IRAS xml file.
- Other UK nations – NHS/HSC R&D form, IRAS xml file plus supporting documentation.

(C) Global governance check information transferred to other UK nation

- England – Global governance check report plus supporting documentation.
- Other UK nations – Global governance check report